

AS SEEN IN
Architectural Digest

HOME AND LIFESTYLES | KANSAS CITY

MEANT TO BE

A chance meeting set Mark Sumada's course in life. Today, his hundreds of clients reap the benefits: stylistic eclecticism and matchless detail in Suma Design & Construction's award-winning custom homes.



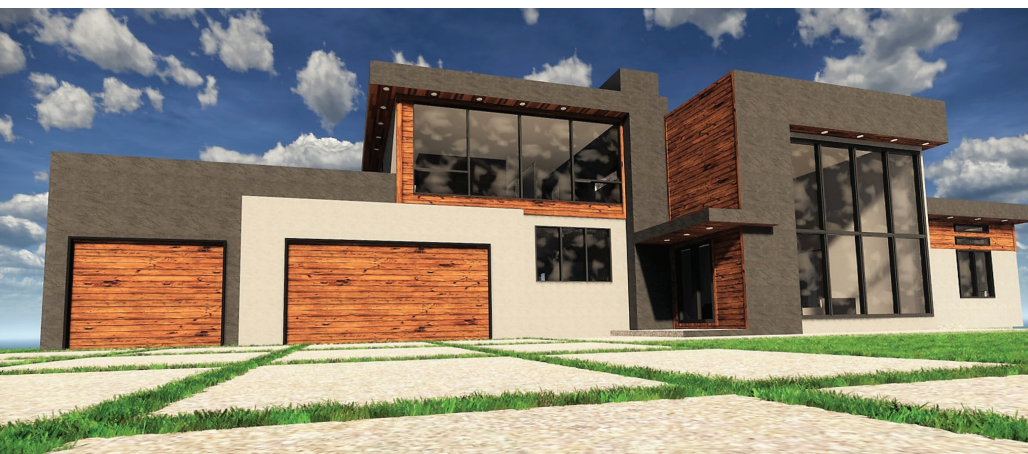
Mark Sumada was a young, promising architectural student at the University of Kansas when his future was set in motion. One of his professors—who worked and studied under Frank Lloyd Wright—influenced Sumada and set the foundation for his career. “Form follows function,” notes the president of Suma Design, “and the spaces we create influence our fondest memories.”

For more than 40 years, Sumada's goal has been to create beautiful spaces that families will enjoy together, grow old in together, and, most of all, call home. He and his team concentrate on the space, integrating technology and combining the newest materials to create stunning, state-of-the-art homes. Suma Design is creative, innovative, and brilliantly unconventional.

Sumada's sons are building on these characteristics. Zach Sumada, an architect, and Ben Sumada, a finance graduate and designer, are taking Suma Design to a new level. Their motto, “lead, don't follow,” guides their design process as they incorporate the next generation of ideas into their projects. They are using 3D technology and virtual reality, for example, and are attuned to their generation's way of life.

Suma Design leads the field and refuses to accept ordinary. But most of all, the firm cares about the homes they create because doing so affects the people who live in them. “Art gives lasting emotions,” says Sumada. “Our desire is to create art with a function; form speaks for itself.”

Sumada's most iconic design, The Madison, features top-tier energy efficient technology as well as unparalleled detail and finish work. The large, open floor plan incorporates 12-foot scissor doors in the great room and breakfast room, opening the spaces to a large covered deck and screened porch. These elements help expand the living area as well as make the outdoors a part of the home. Integrated smart home technology controls the lighting, entertainment systems, and environmental controls, all of which allow the homeowners to control their house from anywhere in the world. The front elevation speaks for itself. It is truly a work of art.



Photos by Matt Kocourek



8143 Clearwater Drive
Parkville, MO 64152
816-532-1555
sumadesigninc.com